

Protect Downstream Equipment

AMERICAN MADE.

PHENOLIC QUAD-RING STRAINER

WITH SCREEN TO PROTECT DOWNSTREAM EQUIPMENT

HIGHLIGHTS

- Protect downstream equipment from dangerous debris such as loose scale, weld beads, grit, metal shavings, PTFE and other damaging foreign material
- Inexpensive protection for meters, regulators, valves, pumps and other mechanical equipment
- Highly effective, point of use protection
- Low compressive load

FEATURES

- Wafer installation, easy to install between two flanges
- Quality construction, stainless steel screen and high quality gasket
- Unit is a functional gasket
- Available in a range of filtration options (from coarse to fine)

SPECIFICATIONS

Sizes: ¾" through 30"

Style: Ring (F) or Full Face (E)

Pressure Class: 150, 300 or 600

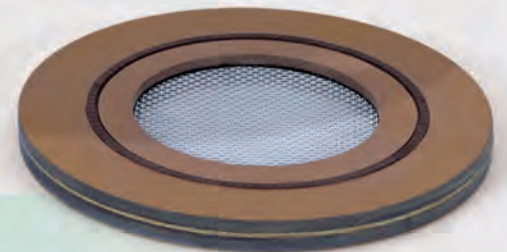
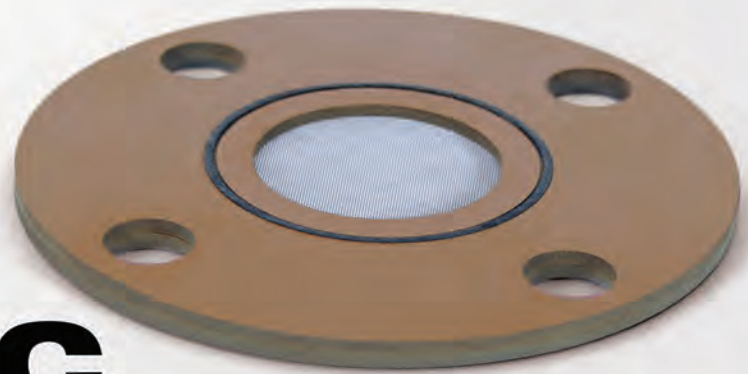
Mesh: 20 Mesh through 120 Mesh

Retainer: Phenolic

Optional Visual Indicator: Nameplate or Tab

Thickness: ¼" Standard (other options available upon request)

Seal: Nitrile Standard (Neoprene, Viton™, PTFE, EPDM optional)



Optional Positive Indicator Nameplate

Gasket Strainer



International Measurement and Control Systems

90 Main Street, PO Box 1605 • Tullytown, PA 19007

1-800-955-4GAS • Phone: (215) 946-2200 • Fax: (215) 943-2984

Email: sales@imacsystems.com

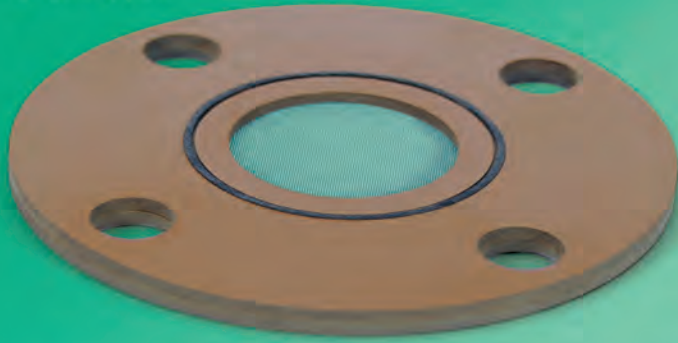
www.imacsystems.com

Distributed By:

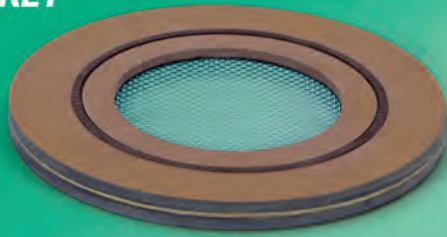
Linc Energy Systems, Inc.

www.LincEnergySystems.com

E GASKET

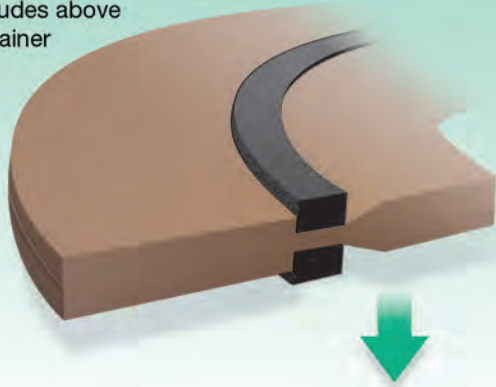


F GASKET



BEFORE TIGHTENING

Seal protrudes above gasket retainer



AFTER TIGHTENING

Seal is compressed into incline plane allowing to self-energize and seal with low compressive load

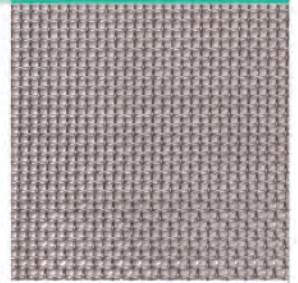


MESH SPECS

ACTUAL SIZE

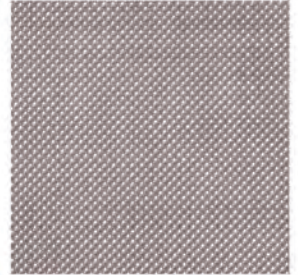
20 MESH

46.20% Open Area
.0160" Diameter Wire
0.034" Openings



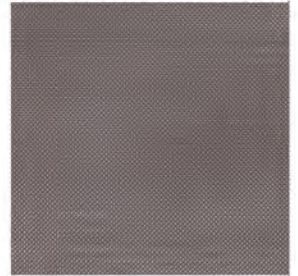
40 MESH

36.00% Open Area
.0100" Diameter Wire
0.015" Openings



60 MESH

30.50% Open Area
.0075" Diameter Wire
0.009" Openings



80 MESH

31.40% Open Area
.0055" Diameter Wire
0.007" Openings



100 MESH

30.30% Open Area
.0045" Diameter Wire
0.006" Openings



TORQUE CHART

NOMINAL PIPE SIZE	RECOMMENDED TORQUE
3/4" through 1 1/4"	40 ft-lbs
1 1/2"	50 ft-lbs
2"	80 ft-lbs
3"	110 ft-lbs
4"	100 ft-lbs
6"	130 ft-lbs