

# Protect Downstream Equipment

**AMERICAN MADE.**

# G10/G11 QUAD-RING STRAINER

**WITH SCREEN TO PROTECT DOWNSTREAM EQUIPMENT**

## HIGHLIGHTS

- Protect downstream equipment from dangerous debris such as loose scale, weld beads, grit, metal shavings, PTFE and other damaging foreign material
- Inexpensive protection for meters, regulators, valves, pumps and other mechanical equipment
- Highly effective, point of use protection
- Low compressive load

## FEATURES

- Wafer installation, easy to install between two flanges
- Quality construction, stainless steel screen and high quality gasket
- Unit is a functional gasket
- Available in a range of filtration options (from coarse to fine)

## SPECIFICATIONS

**Sizes:** ¾" through 30"

**Style:** Ring (F) or Full Face (E)

**Pressure Class:** 150, 300 or 600

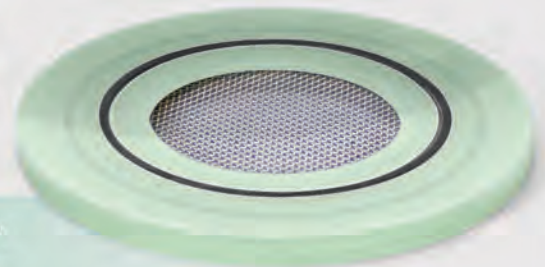
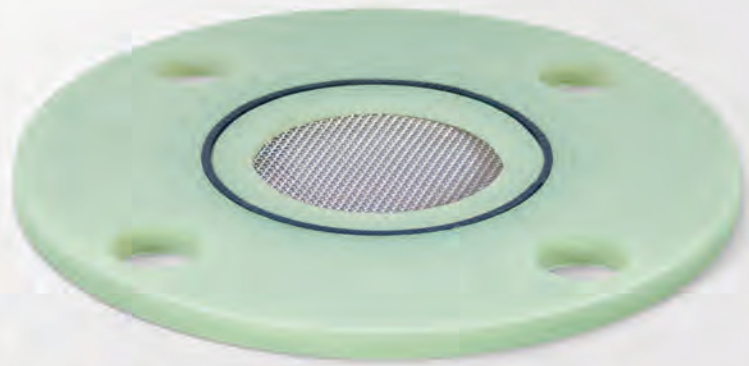
**Mesh:** 20 Mesh through 120 Mesh

**Retainer:** G10/G11

**Optional Visual Indicator:** Nameplate or Tab

**Thickness:** ¼" Standard (other options available upon request)

**Seal:** Nitrile Standard (Neoprene, Viton™, PTFE, EPDM optional)



Optional Positive Indicator Nameplate

Gasket Strainer



International Measurement and Control Systems

90 Main Street, PO Box 1605 • Tullytown, PA 19007

1-800-955-4GAS • Phone: (215) 946-2200 • Fax: (215) 943-2984

Email: sales@imacsystems.com

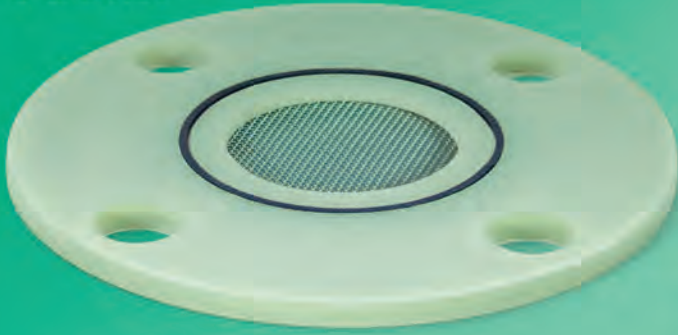
www.imacsystems.com

**Distributed By:**

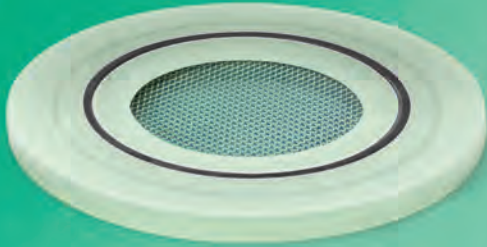
**Linc Energy Systems, Inc.**

www.LincEnergySystems.com

## E GASKET

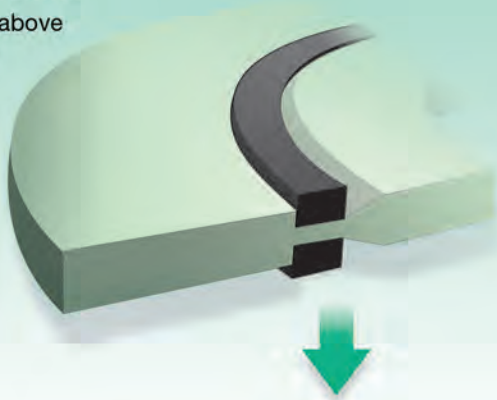


## F GASKET



### BEFORE TIGHTENING

Seal protrudes above gasket retainer



### AFTER TIGHTENING

Seal is compressed into incline plane allowing to self-energize and seal with low compressive load

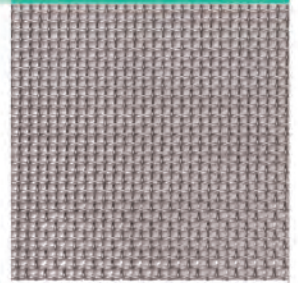


### MESH SPECS

### ACTUAL SIZE

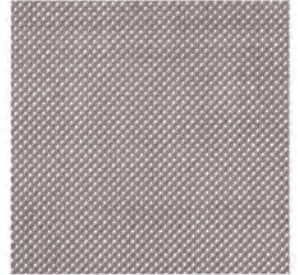
#### 20 MESH

46.20% Open Area  
.0160" Diameter Wire  
0.034" Openings



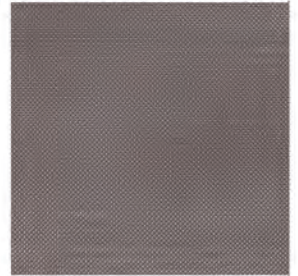
#### 40 MESH

36.00% Open Area  
.0100" Diameter Wire  
0.015" Openings



#### 60 MESH

30.50% Open Area  
.0075" Diameter Wire  
0.009" Openings



#### 80 MESH

31.40% Open Area  
.0055" Diameter Wire  
0.007" Openings



#### 100 MESH

30.30% Open Area  
.0045" Diameter Wire  
0.006" Openings



### TORQUE CHART

NOMINAL PIPE SIZE	RECOMMENDED TORQUE
3/4" through 1 1/4"	40 ft-lbs
1 1/2"	50 ft-lbs
2"	80 ft-lbs
3"	110 ft-lbs
4"	100 ft-lbs
6"	130 ft-lbs